



INTRODUCTION TO ITC

Gary R. Kirsh

Area Manager

May 15, 2024



FOR THE GREATER GRID.



Linda Apsey – ITC CEO



Simon Whitelocke – Pres. ITC MI



Cynthia Stump – Director LGCA

OUR VISION

Greater Grid.



Greener Future.



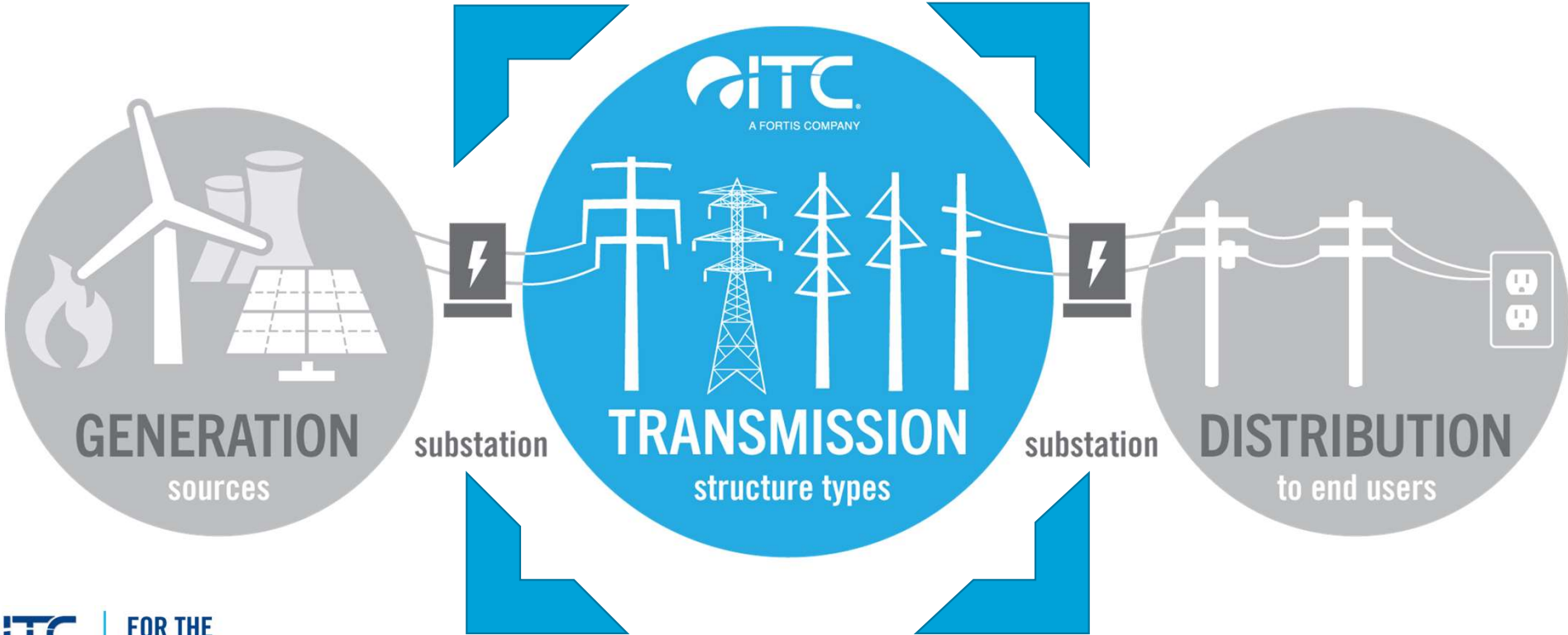
A FORTIS COMPANY

FOR THE
GREATER GRID.



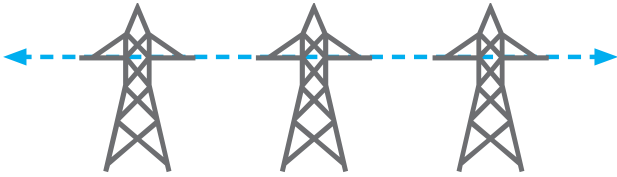
DEEP EXPERTISE

Sole focus on transmission

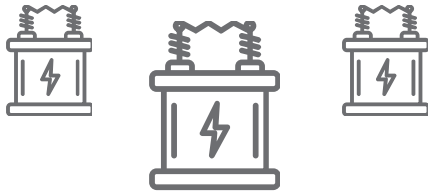


ITC PROFILE

16,000 MILES
of transmission lines

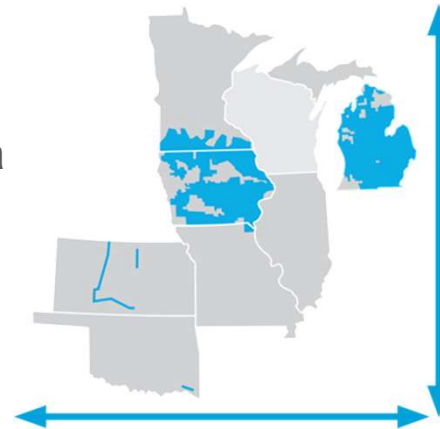


673 stations and substations



90,000-SQUARE MILE
Service Territory

Michigan
Iowa
Minnesota
Illinois
Missouri
Kansas
Oklahoma



700+ employees, and
1,000+ skilled labor contractors



Member of **4 RTOs**

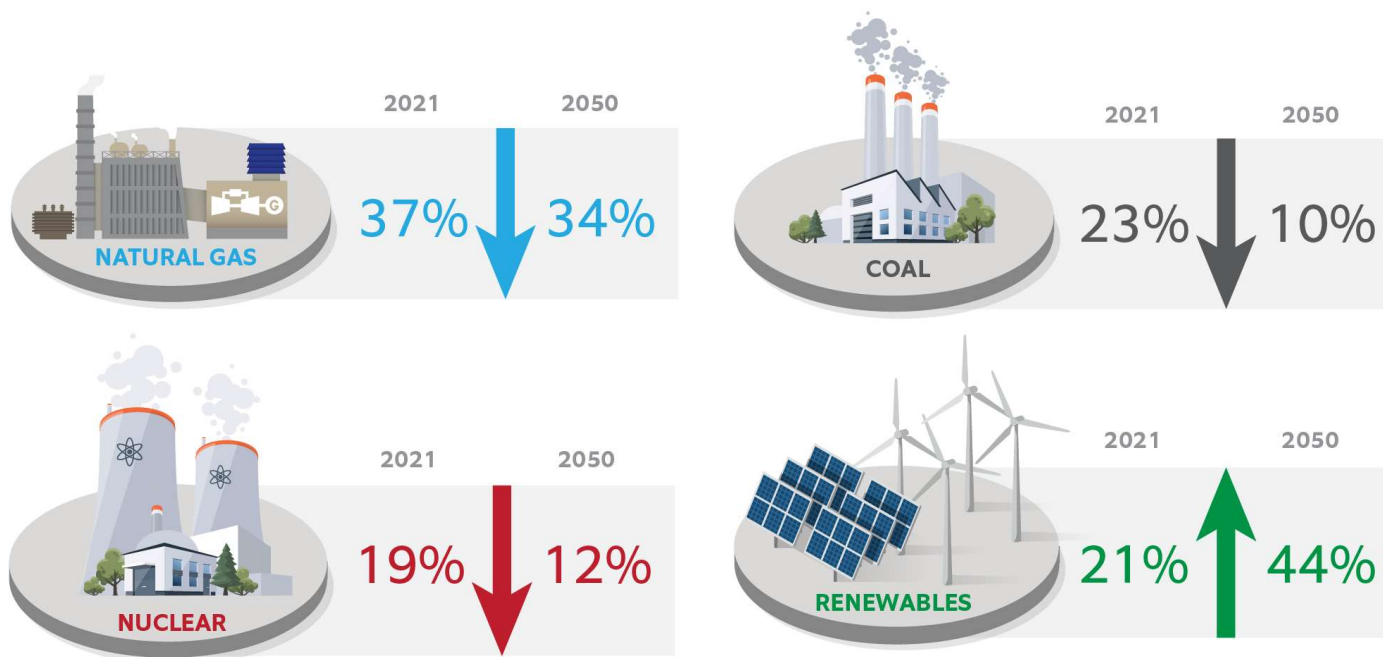
NEED FOR MODERNIZATION

**25% INCREASE IN
ELECTRIC DEMAND
BY 2030**



**FOR THE
GREATER GRID.**

CHANGING GENERATION MIX

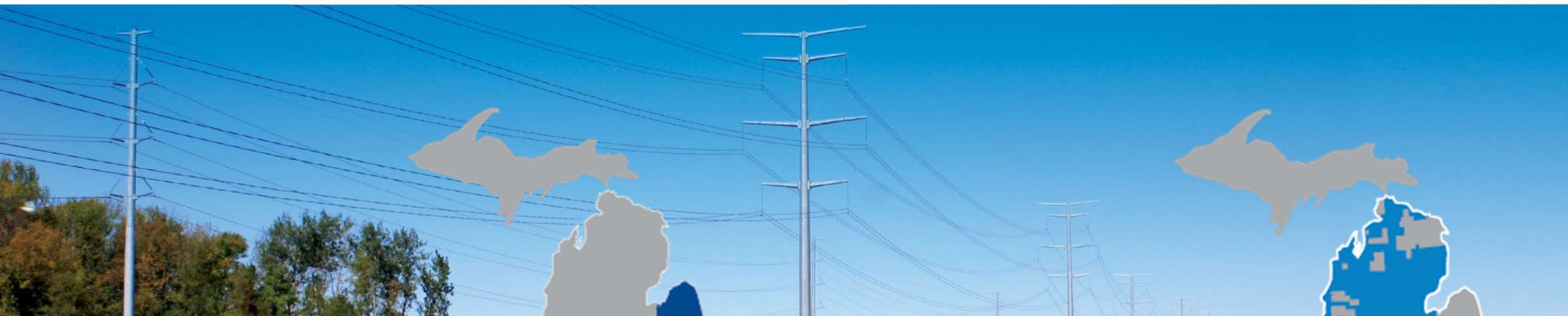


DIVERSE DRIVERS FOR MODERNIZATION

- Coal plant closures
- New and remote generation sources
- Increased electrification
- Interconnections
- Severe weather
- Cyber threats



ITC MICHIGAN



ITC Transmission

- Established 2003
- ~3,100 miles of line serving SE Michigan
- Top-tier system reliability
- 120kV - 345kV range



METC

- Established 2006
- ~5,600 miles of line serving most of Lower Peninsula
- Top-tier system reliability
- 120kV - 345kV range



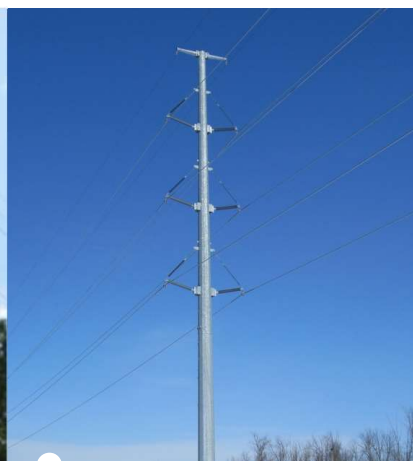
ITC MICHIGAN: Transmission Structures



~ 55,000
Transmission
Structures



Steel Structures



Wood, Steel and
Lattice Structures



Steel and Lattice
Structures



Steel and Lattice
Structures

KEY IMPACTS: MICHIGAN



CUSTOMER SAVINGS:

ITC Michigan saved customers

\$220 million/yr.

thanks to reduced electricity production and delivery costs, and improved quality of service.



JOB CREATION:

ITC Michigan's investments in its footprint support approximately

2,500 jobs annually



LOCAL SPENDING:

Spending in local economies from direct investments and other economic activities has increased by

\$240 million/yr.



TAX REVENUES:

Benefitting local, state, and federal entities, tax revenues generated by ITC's investments and activities amount to more than

\$49 million/yr.

RESILIENCY CASE STUDY: DISASTER RESPONSE

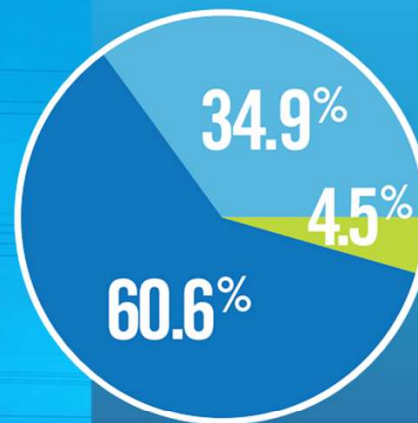
MICHIGAN WINDSTORM: MARCH 8, 2017

- 60 mph winds
- One million without power
- No sustained outages
- Customer collaboration



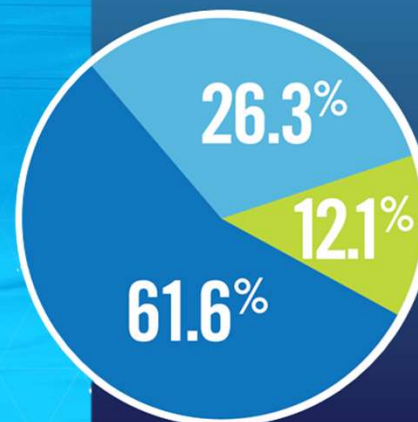
TRANSMISSION: SMALLEST PORTION OF BILL DELIVERS BIG BENEFITS

INSIDE AN ELECTRIC BILL



Typical Monthly Residential Bills:
MICHIGAN
Usage: 650 kWh/month

Source: Michigan Public Service Commission 2023 data



Major Components of
U.S. AVERAGE
Electricity Price, 2022
(Cents per kWh and Share of Total)

Source: U.S. Energy Information Administration

- Generation
- Distribution
- Transmission



FOR THE GREATER GRID.

LOCAL GOVERNMENT AND COMMUNITY AFFAIRS

MICHIGAN CONTACT INFORMATION

Cynthia Stump, Regional Manager
(248) 207-3038
cstump@itctransco.com

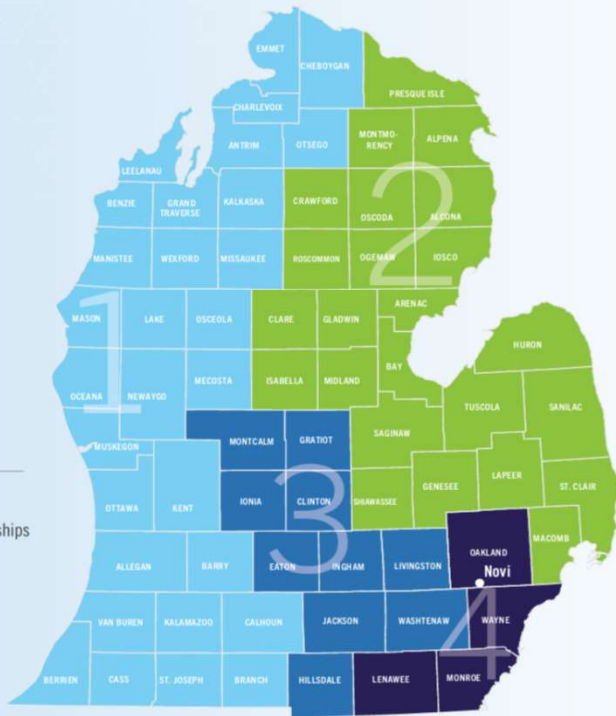
1 **Nora Balgoyen**
(269) 792-7228
nbalgoyen@itctransco.com

2 **Neal Bishop**
(313) 310-0084
nbishop@itctransco.com

3 **Kyle Mazurek**
(734) 474-7402
kmazurek@itctransco.com

4 **Adelaide Pascaris**
(248) 469-2131
apascaris@itctransco.com

Gary Kirsh, Statewide Vegetation
Outreach & Environmental Partnerships
(586) 707-5773
gkirsh@itctransco.com



FOR THE GREATER GRID.

LOCAL GOVERNMENT AND COMMUNITY AFFAIRS

MICHIGAN PERMITTING TERRITORIES

Cynthia Stump, Director
(248) 207-3038
cstump@itctransco.com

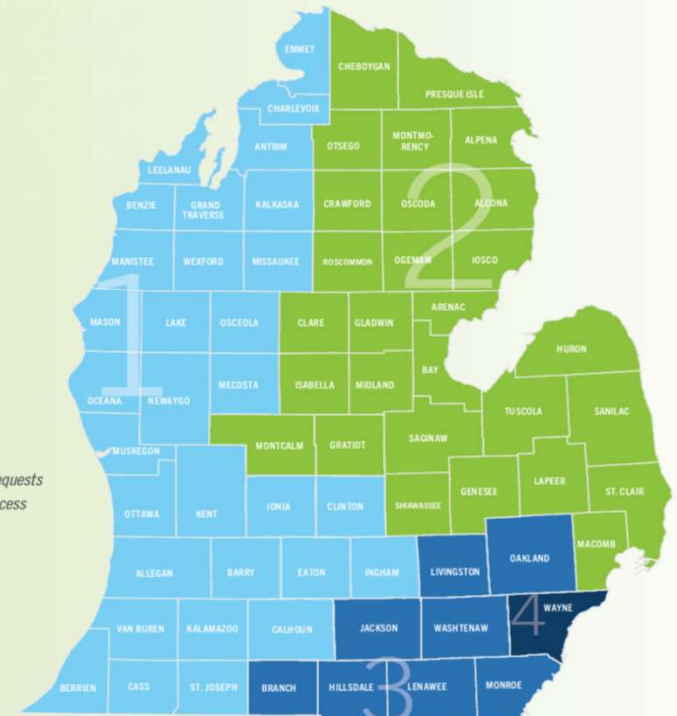
1 **Tonya Hunter**
(517) 862-5619
thunter@itctransco.com

2 **Gretchen Railling, PE**
(810) 240-5686
grailling@itctransco.com

3 **Kat Blodgett**
(517) 732-8091
kblodgett@itctransco.com

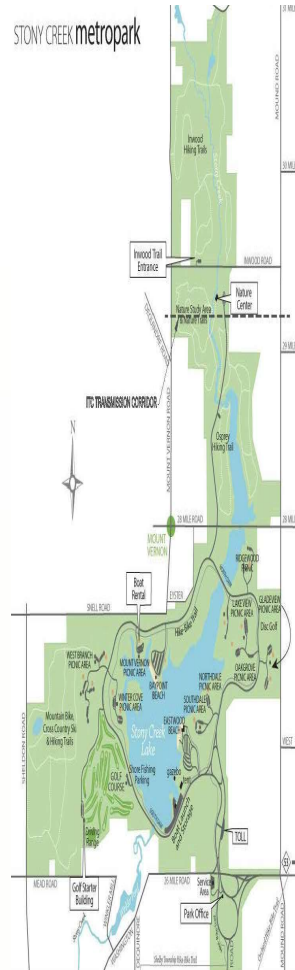
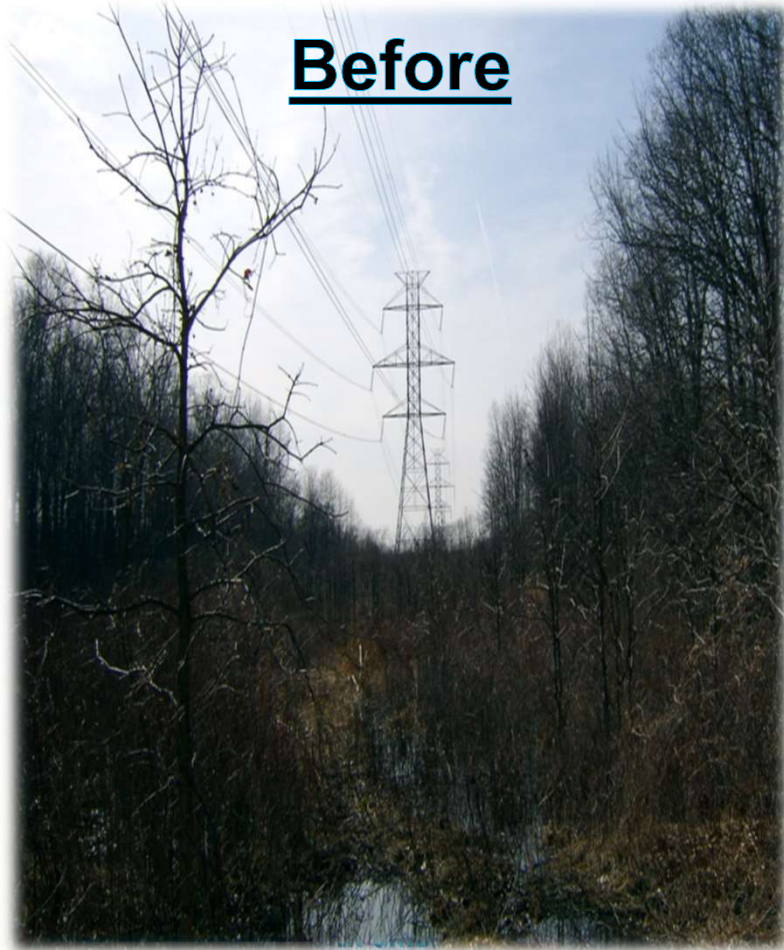
4 **Erika Davis**
(248) 910-5148
edavis@itctransco.com

- All ITC asset road relocation requests
- Environmental permit RFP process



Stony Creek Metro Park – Washington, MI

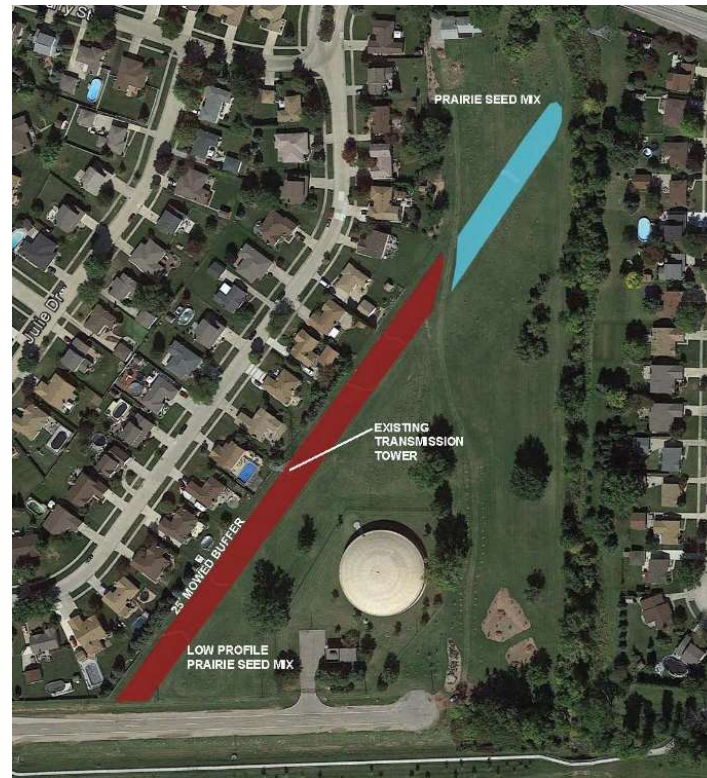
Before



After



Tomlinson Arboretum - Clinton Township



CELEBRATING 10 YEARS IMPROVING ELECTRIC RELIABILITY AND POWERING THE MIDWEST.



ENERGY GRID.

Tomlinson Arboretum- Clinton Township, MI



CELEBRATING 10 YEARS IMPROVING ELECTRIC
RELIABILITY AND POWERING THE MIDWEST.

E
ER GRID.

Trail Partnerships

Mutually Beneficial Trail Partnerships

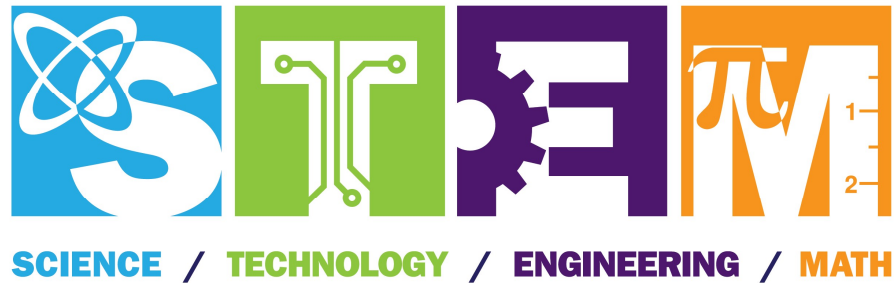
- Transmission corridor trails: Canton, Clinton River Trail Kalamazoo River Valley Trail, Macomb Orchard Trail, Novi, MI Air Line Trail, & West Bloomfield
- Statewide Trails:
 - The Great Lake-to-Lake Trails
 - Michigan's Iron Belle Trail



CELEBRATING 10 YEARS IMPROVING ELECTRIC RELIABILITY AND POWERING THE MIDWEST.



STEM EDUCATION SUPPORT ACROSS OUR FOOTPRINT



- K-12 school programs
- Community college recruiting
- Major university engineering program consulting

ENTERPRISE-WIDE EFFORT

ITC's commitment to the environment begins with employees in our workplaces—and extends to building, operating, and maintaining our transmission systems.





Thank You – for your Time

QUESTIONS-