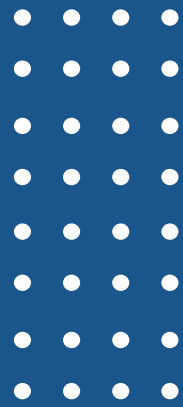




Planning and Economic  
Development

# Parks and Natural Resources *Plan Update*



**Gerard Santoro, AICP**  
Program Director, Parks and  
Natural Resources



**Amanda Minaudo, AICP**  
Program Director, Planning and  
Community Development



**Amanda Oparka, AICP**  
Senior Planner, Parks and Natural  
Resources



**Luke Hefferan**  
Associate Planner

# Department Mission

The department's goal is to *Retain, Grow* and *Attract* economic investment while improving overall quality of life for residents that *Live, Work* and *Play* in Macomb County.

Our *five* program areas include:

- Economic Development
- Parks and Natural Resources
- Mapping and Data Services
- Community Planning
- Marketing and Communications





# Parks and Natural Resources



Planning and Economic Development



**Gerard Santoro, AICP**  
Program Director



**Amanda Oparka, AICP**  
Senior Planner



**Luke Hefferan**  
Associate Planner



# Parks & Natural Resources - Planning



**Blue Economy Initiative**



**Green Macomb Brand**



**Resources for Local Government**



**Strategic Planning Efforts**



**Parks & Natural Resources Plan**





# Innovative Multi Use Recreational Planning



Planning and Economic Development





# Greenways of Macomb





## Vision NORTH BRANCH GREENWAY



**Planning &  
Economic  
Development**

---

CLINTON TOWNSHIP
MACOMB TOWNSHIP
RAY TOWNSHIP
ARMADA TOWNSHIP
LENOX TOWNSHIP



Kayaking



Equestrian trails



Boating of proposed activities at Wascoy MI Amphitheatre



Lobby view view for a potential northern Macomb/Leicester Bay Township office campus building



Paved path



**NORTH BRANCH GREENWAY VISION**

With funding support from SEMDCO, the Macomb County Planning and Economic Development Department in cooperation with a multi-agency Steering Committee, led the creation of a long-term vision for a connected greenway traversing north-south through the center of Macomb County along the North Branch of the Clinton River.

The North Branch Greenway is a vision for a protected and connected riparian corridor that will assist with habitat conservation, flood reduction, and create a network of trails that would connect the Freedom Trail in the south to the Macomb Orchard Trail in the north. It's envisioned that this connected network of trails could develop in a variety of ways and fit a variety of recreational opportunities from paved trails for biking and walking to unpaved trails for hiking, mountain biking and horseback riding. This vision also looks to capture opportunities for improved fishing access and seasonal water trails for kayaking and canoeing.

This poster is a companion piece to the North Branch Greenway Vision report that was developed in order to assist in policy development, master plan and ordinance development, land acquisition and creation and promotion of recreation opportunities.

For more information, go to [GreenMacomb.org](http://GreenMacomb.org) or contact the Macomb County Planning and Economic Development Department at [green@macombcountymichigan.org](mailto:green@macombcountymichigan.org) (586) 669-5285

- MUNICIPAL BOUNDARY
- RIVER/CREEK
- FLOODPLAIN
- PUBLIC PARK/SCHOOL PROPERTY
- EXISTING NON-MOTORIZED FACILITY
- EXISTING EQUESTRIAN TRAIL
- PROPOSED NORTH BRANCH GREENWAY TRAIL
- PROPOSED NON-MOTORIZED CONNECTORS
- PROPOSED WIDE PAVED SHOULDERS
- \* POTENTIAL KAYAK LAUNCH
- \* PROPOSED FISHING ACCESS

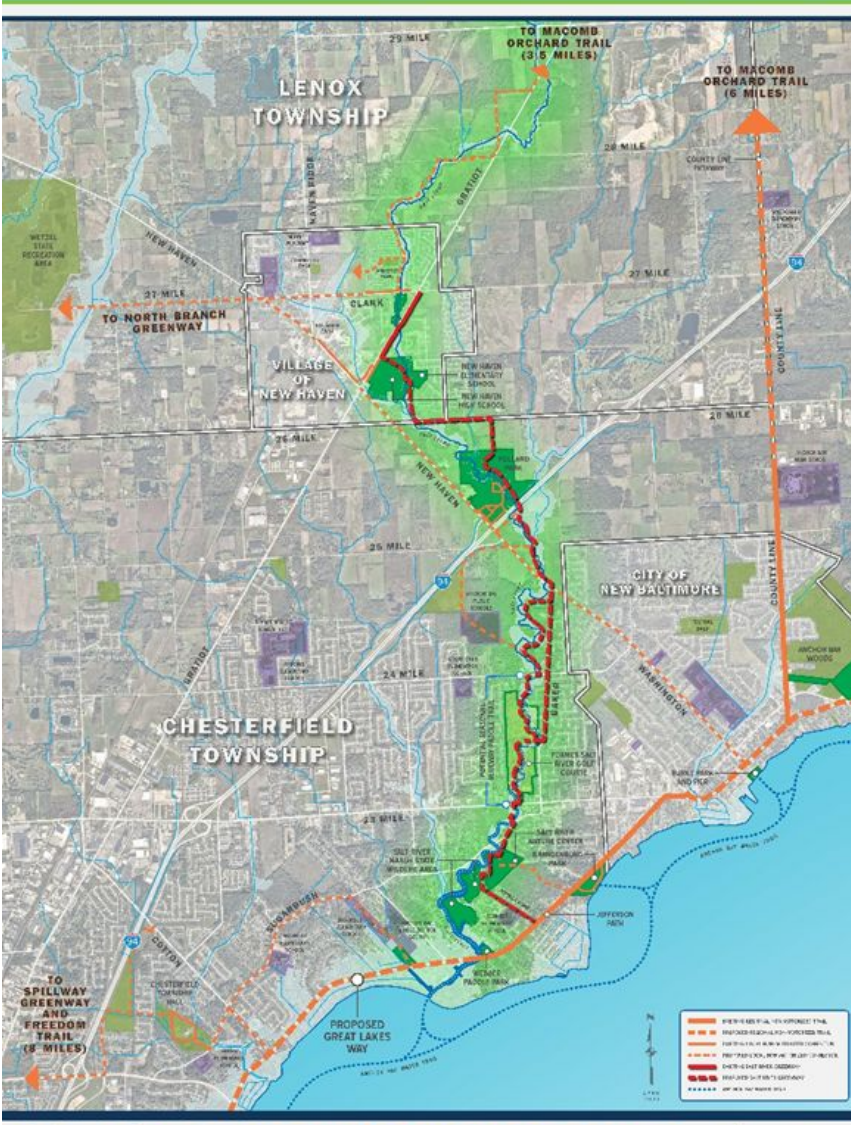
JUNE 2020











**SALT RIVER GREENWAY**

TO NORTH BRANCH GREENWAY (3.5 MILES)




TO MACOMB ORCHARD TRAIL (3.5 MILES)

TO MACOMB ORCHARD TRAIL (6 MILES)

TO SPILLWAY AND FREEDOM TRAIL (2 MILES)

PROPOSED GREAT LAKES WAY

- EXISTING EQUESTRIAN TRAIL
- PROPOSED EQUESTRIAN TRAIL
- PROPOSED WIDE PAVED SHOULDERS
- PROPOSED NON-MOTORIZED CONNECTORS
- PROPOSED NORTH BRANCH GREENWAY TRAIL
- EXISTING EQUESTRIAN TRAIL
- PROPOSED NON-MOTORIZED CONNECTORS
- PROPOSED WIDE PAVED SHOULDERS
- \* POTENTIAL KAYAK LAUNCH
- \* PROPOSED FISHING ACCESS



# Greenways of Macomb

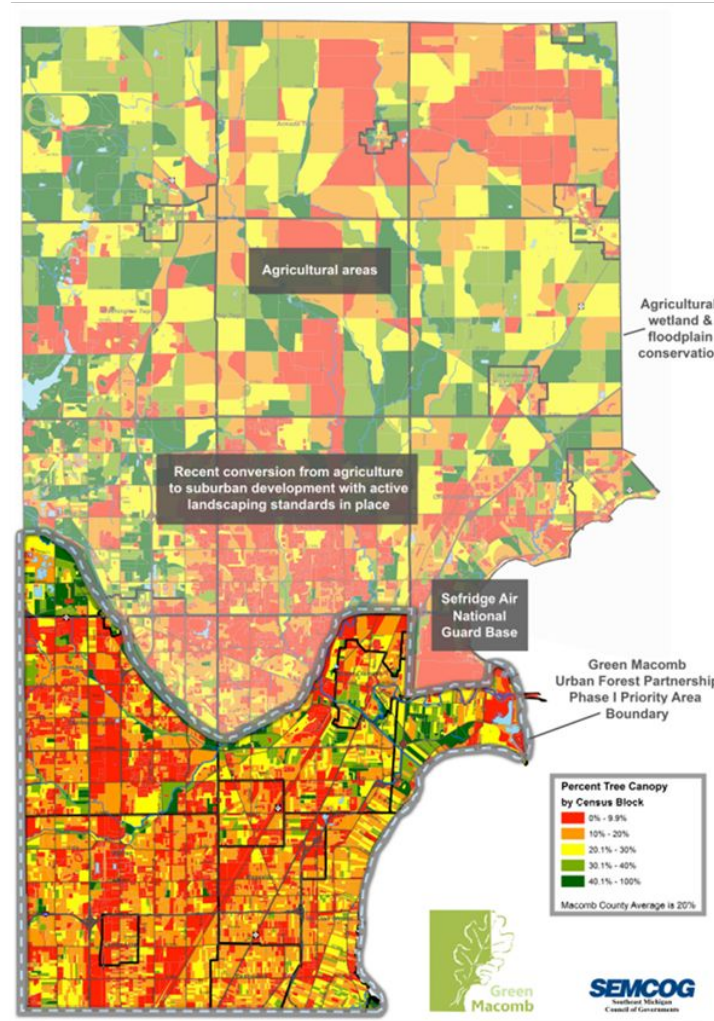


SUSTAINABLE • EQUITABLE • PARTNERSHIPS • FLOOD CONTROL • SAFE • RECREATION • EDUCATION • ART • HABITAT • CONNECTIONS



## CLINTON RIVER SPILLWAY *Vision*





## Benefits of Trees: Double Tree Canopy

- Improve water quality
- Increase aesthetics and property values
- Reduce potential of flooding
- Enhance quality of life
- Support public health
- Support existing infrastructure

## Current Funding:

- Consumers Energy \$200K
- CN Railroad - Bloom America \$25K
- Second Nature Foods \$20K
- Congressional Spending \$500K

[greenmacomb.com](http://greenmacomb.com)



Arbor Day

TREE AND  
PLANT SALE



# Green Infrastructure Planning



Planning &  
Economic  
Development

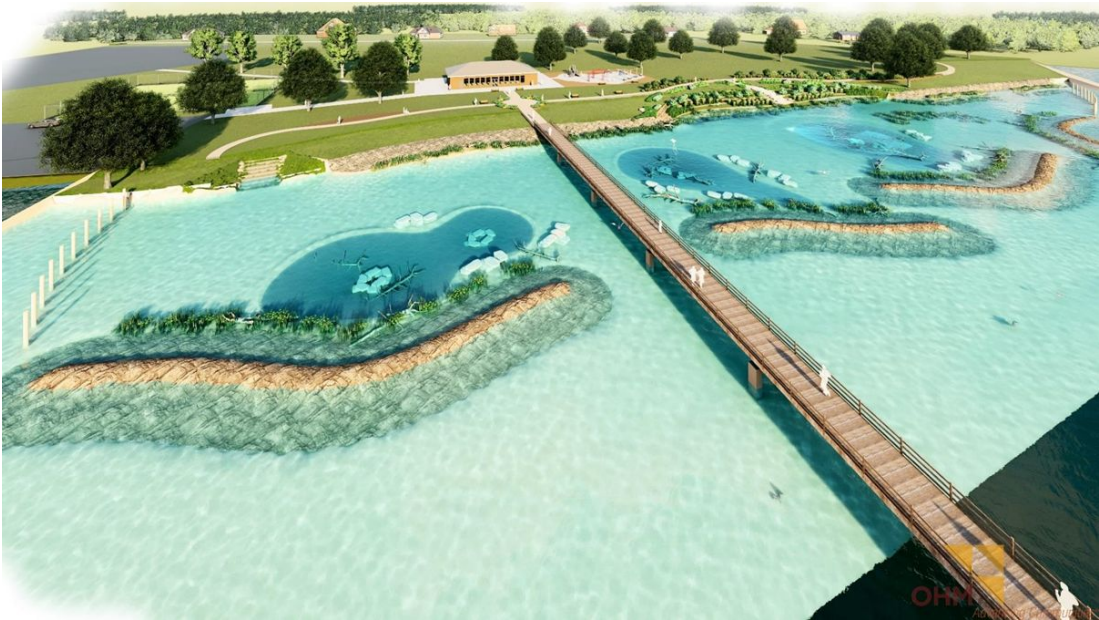


Photos courtesy of CRWC WaterTowns Program



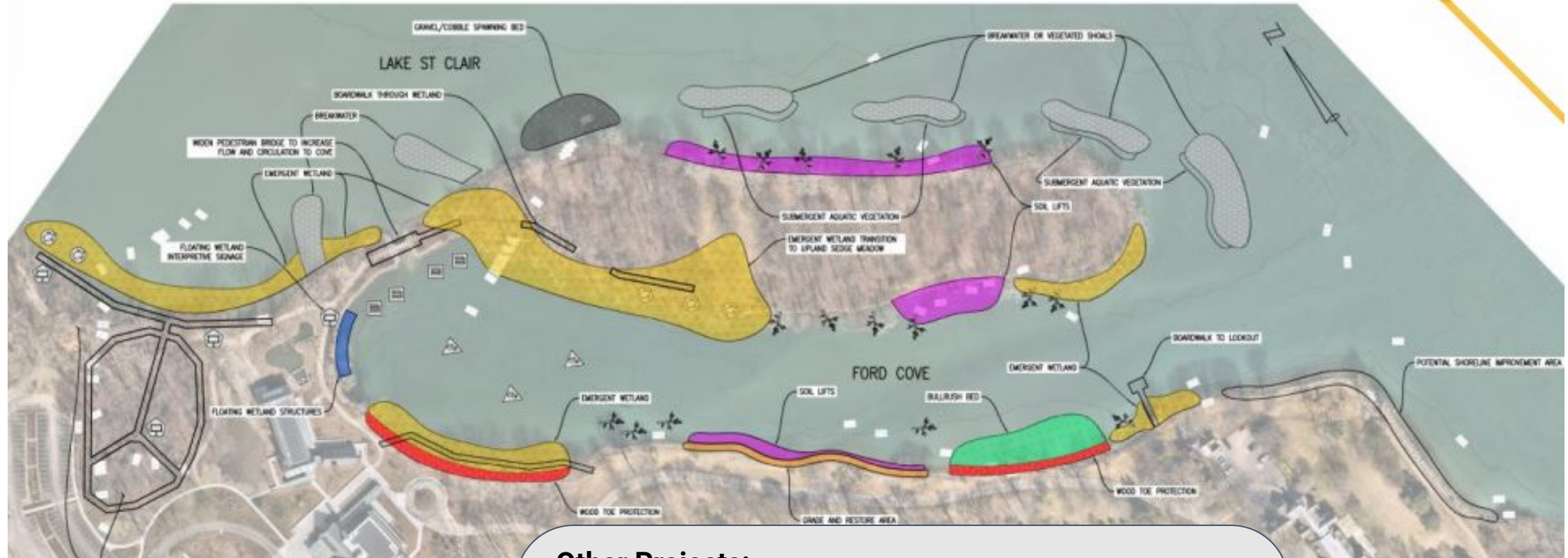


# Brandenburg Park- Chesterfield Twp





# Project Example: Lake St. Clair Habitat Restoration



### Other Projects:

- Riedisale Park - New Baltimore
- Red Run - south bank - Sterling Heights
- Anchor Bay Woods - New Baltimore
- Huron Pointe - Lake St. Clair Metropark - Harrison Twp
- Partridge Creek - Clinton and Macomb Twps

**Current Concept**



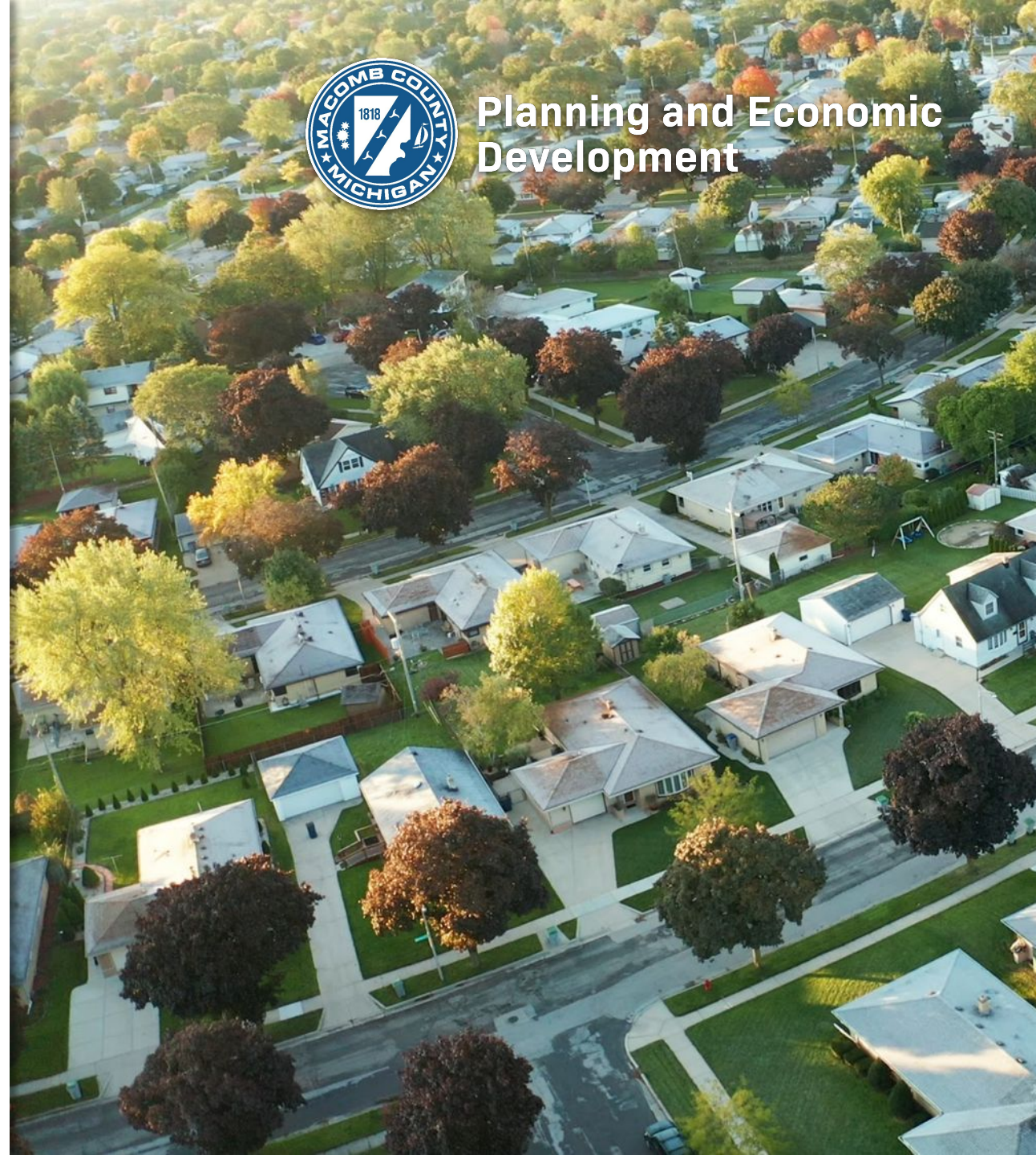
# Community Planning Services



**Amanda Minaudo, AICP**  
Program Director



Planning and Economic  
Development





## Goals

- Help build strong and resilient communities
- Cultivate productive partnerships
- Support community placemaking efforts and quality of life enhancements

## Key Services



**Community Planning**



**Community Development  
Program**



**Infrastructure Planning**



**Non-Motorized Planning  
& Support**



**Macomb County  
Brownfield Program**





## Community Planning Services & Public Outreach

- Master Plan, Parks & Recreation Plan, Site Plan Assistance
- Zoning Ordinance Updates
- Facilitate visioning work sessions
- Unique outreach strategies

## MCPED Placemaking Grant

- Eligible projects will revitalize or create public spaces in our local downtown communities and will enhance quality of life, help attract and retain talent, and grow stronger local economies
- Grant awards can range from \$5,000 - \$20,000 with a 1:1 match required
- Applications open annually in early spring
- Visit [macombgov.org/ped](https://macombgov.org/ped) for more information!





## Non-Motorized Transportation Planning

- Assist communities in developing their non-motorized systems, and more specifically, connect themselves to the greater county-wide, regional, and statewide trail networks.
- Iron Belle, Freedom Trail, Macomb Orchard Trail, Great Lakes Way Trail - [macombgov.org/trails](https://macombgov.org/trails)
- Mobilize Macomb – identifies and prioritizes various routes throughout Macomb County
- Macomb County Match Program - newly launched program where communities can apply for County assisted match toward grants, such as TAP. Currently open through the end of April





## Infrastructure Planning

- Electric Vehicle Infrastructure
- County-wide Broadband Initiative
- Materials Management Study (SEMCOG & EGLE)

## Brownfield Redevelopment Authority

- Brownfield Redevelopment Finance Act
- EPA Assessment Grant
- Revolving Loan Fund Program







Clinton River Spillway Inter-County Drain

Regional Shared Use Path

Local Sidewalk

Completed Habitat Restoration

DNR Boat Launch

Potential Fishing Piers

Spillway Park

Future Accessible Kayak Launch

Jefferson Avenue

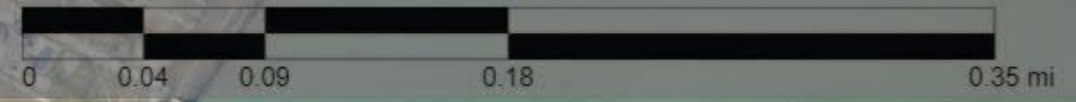
Project Limits

Lake St. Clair

Saint Christopher

Regional Shared Use Path

# Spillway Pedestrian Bridge and Fishing Pier















**THANK  
YOU!**